



# Capital Electrical

## QLD 2022 SMOKE ALARM LEGISLATION EXPLAINED DWELLINGS BEING SOLD

### From the 1<sup>st</sup> January 2022

Property sellers must continue to lodge a Form 24 with the Queensland Land Registry Office stating the requirements of the smoke alarm legislation have been met.

#### Smoke alarms in the dwelling must:

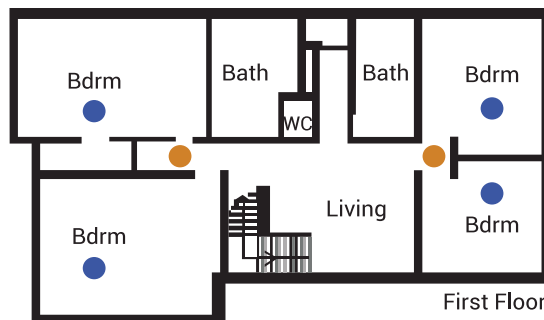
- » be photoelectric (AS 3786-2014);
- » not also contain an ionisation sensor;
- » be less than 10 years old;
- » operate when tested; and
- » be interconnected with every other smoke alarm in the dwelling so all activate together.

#### Smoke alarms must be installed on each storey:

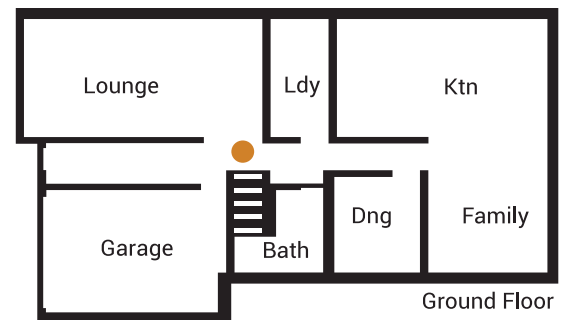
- » in each bedroom;
- » in hallways which connect bedrooms and the rest of the dwelling; or
- » if there is no hallway, between the bedrooms and other parts of the storey;
- » if there are no bedrooms on a storey at least one smoke alarm must be installed in the most likely path of travel to exit the dwelling.

Smoke alarms must be hardwired or powered by a non-removable 10-year battery, or a combination of both may be allowed.

**PLEASE NOTE:**  
**YOU MUST INSTALL ALARMS IN THE ORANGE AND BLUE LOCATIONS OTHERWISE YOU CANNOT SELL YOUR PROPERTY AFTER 1ST JANUARY 2022!**



● Smoke alarms (current laws)



● Smoke alarms (2022 laws)

### Pricing Guide (EMERALD SMOKE ALARMS)

#### Low Set House or Unit:

- » 1 Bedroom (2 Alarms) = **\$238.00**
- » 2 Bedroom (3 Alarms) = **\$357.00**
- » 3 Bedroom (4 Alarms) = **\$476.00**
- » 4 Bedroom (6 Alarms) = **\$714.00**
- » 5 Bedroom (7 Alarms) = **\$833.00**

#### Double Storey House:

- » 3 Bedroom (5 Alarms allowing for 1 Alarm on the lower level) = **\$595.00**
- » 4 Bedroom (7 Alarms allowing for 1 Alarm on the lower level) = **\$833.00**
- » 5 Bedroom (8 Alarms allowing for 1 Alarm on the lower level) = **\$952.00**

*Please note that any study, media room or room that can be closed off must be treated as a bedroom and additional alarms will need to be installed at a cost of \$119.00 per alarm.*

**Please contact us for further enquiries:**

1300 785 936 | [electricalinfo@capitaltrades.com.au](mailto:electricalinfo@capitaltrades.com.au) | [capitalelectric.com.au](http://capitalelectric.com.au)



**Capital Electrical**